



Left ventricular diastolic function and dysfunction: Central role of echocardiography

Hisham Dokainish

*hisham.dokainish@phri.ca

DOI: <http://dx.doi.org/10.5339/gcsp.2015.3>

Submitted: 2 November 2014

Accepted: 28 January 2015

Running head: Dokainish. GCSP 2015:3

Cite this article as: Dokainish H. Left ventricular diastolic function and dysfunction: Central role of echocardiography, Global Cardiology Science and Practice 2015:3 <http://dx.doi.org/10.5339/gcsp.2015.3>

Copyright: 2015 Dokainish, licensee Bloomsbury Qatar Foundation Journals. This is an open access article distributed under the terms of the Creative Commons Attribution license CC BY-4.0, which permits unrestricted use, distribution and reproduction in any medium, provided the original work is properly cited.

THIS PROVISIONAL PDF CORRESPONDS TO THE AUTHOR-SUPPLIED ARTICLE AS IT WAS ACCEPTED. FULLY FORMATTED PDF AND HTML VERSIONS WILL BE MADE AVAILABLE SOON.

This peer-reviewed article, like all on QScience.com, was published immediately upon acceptance. It can be downloaded, printed and distributed freely provided the original work is properly attributed.

For information about publishing your research in QScience.com journals, please go to <http://authorsqscience.com/>

Left ventricular diastolic function and dysfunction: Central role of echocardiography

Hisham Dokainish

Corresponding Author:

Hisham Dokainish, M.D., FRCPC, FASE, FACC

Associate Professor of Medicine, McMaster University

Director of Medical Diagnostic Units and Echocardiography, Hamilton Health Sciences

237 Barton St. E. CVSRI #C3 111

Hamilton, ON, Canada L8L 2X2

Tel. 905-527-4322 ext. 40327

Email: hisham.dokainish@phri.ca

Abstract

Comprehensive and precise assessment of left ventricular (LV) systolic and diastolic function is necessary to establish, or exclude, heart failure as a cause or component of dyspnea. Echocardiography with Doppler readily assesses LV diastolic function; advantages include that echocardiography is non-invasive, does not require radiation, is portable, rapid, readily available, and in competent hands, can provide an accurate and comprehensive assessment of LV systolic and diastolic function. Correct assessment of LV diastolic function is relevant in patients with both depressed and preserved LV ejection fraction (EF $\geq 50\%$, and $< 50\%$, respectively). Tissue Doppler (TD) imaging has been useful in demonstrating impaired LV relaxation in the setting of preserved LVEF, which, in the setting of increased cardiac volume, can result in elevated LV filling pressures, and dyspnea due to diastolic heart failure. TD imaging is not always critical in patients with depressed LVEF, since such patients by definition have impaired LV relaxation, and thus significant increases in volume will result in increases in LV filling pressure due to impaired LV compliance. Thus, in depressed LVEF, transmitral flow velocities (E and A, and E/A) and deceleration time, pulmonary venous Doppler, left atrial volume, and pulmonary artery (PA) pressures suffice for the accurate assessment of LV filling pressures. Overall, diastolic assessment by echo-Doppler can be readily achieved in by using a comprehensive diastolic assessment—incorporating many 2-dimensional, conventional and tissue Doppler variables—as opposed to relying on any single, diastolic parameter, which can lead to errors.

Background

Echocardiography with Doppler readily assesses LV diastolic function; advantages include that echocardiography is non-invasive, does not require radiation, is portable, rapid, readily available, and in competent hands, can provide an accurate and comprehensive assessment of LV systolic and diastolic function. Correct assessment of LV diastolic function is relevant in patients with both depressed and preserved LV ejection fraction (EF $\geq 50\%$, and $< 50\%$, respectively). Tissue Doppler (TD) imaging has been useful in demonstrating impaired LV relaxation in the setting of preserved LVEF, which, in the setting of increased cardiac volume, can result in elevated LV filling pressures, and dyspnea due to diastolic heart failure. TD imaging is not always critical in patients with depressed LVEF, since such patients by definition have impaired LV relaxation, and thus significant increases in volume will result in increases in LV filling pressure due to impaired LV compliance. Thus, in depressed LVEF, transmitral flow velocities (E and A, and E/A) and deceleration time, pulmonary venous Doppler, left atrial volume, and pulmonary artery (PA) pressures suffice for the accurate assessment of LV filling pressures. Overall, diastolic assessment by echo-Doppler can be readily achieved in by using a comprehensive diastolic assessment—incorporating many 2-dimensional, conventional and tissue Doppler variables—as opposed to relying on any single, diastolic parameter, which can lead to errors.

Two-dimensional echocardiography: Left ventricular mass and wall motion, and left atrial size

The following criteria are needed for the diagnosis of diastolic heart failure (DHF): clinical picture consistent with HF, demonstration of preserved left ventricular ejection fraction (LVEF), and demonstration of diastolic dysfunction.¹ Clinically, diastolic dysfunction, secondary to impaired LV relaxation and increased LV stiffness, is usually demonstrated by echocardiography and Doppler.^{2 3 4 5 6} The best correlate of symptoms and survival in DHF is elevation of left atrial (or left ventricular filling) pressure, readily estimated using comprehensive echocardiography with Doppler.^{1, 2} Demonstration of preserved LVEF is readily demonstrated with 2-dimensional echocardiography.⁷ It should be noted that DHF is a term used relatively interchangeably with “HF with preserved LVEF” and “HF with normal LVEF”.

In patients with heart failure and preserved LVEF, LVEF is preserved $\geq 50\%$, yet, left atrial pressures—synonymous with LV filling pressures in the absence of obstructive MV disease—are elevated, causing increased pulmonary venous pressures and dyspnea at rest or during exertion.¹⁻⁶ In order for LA pressures to be elevated in the absence of significantly depressed LVEF, LV relaxation and compliance generally are depressed, most often occurring in hypertensive or ischemic heart disease.²⁻⁵ 2-dimensional echocardiography, therefore, identifies LV abnormalities that create the substrate for LV diastolic dysfunction: LV hypertrophy and LV wall motion abnormalities. Increased LV mass ($\geq 90 \text{ g/m}^2$ for women and $\geq 115 \text{ g/m}^2$ for men, i.e. LV hypertrophy) is common in

patients with DHF⁵ (Figure 1). Previous studies have correlated increasing degrees of LV mass with increasing LV diastolic dysfunction and filling pressures.⁸ In addition, since LVEF can be preserved even in presence of significant coronary artery disease, LV wall motion abnormalities create the substrate for significant LV diastolic dysfunction even in the patient with preserved LVEF who may have a diagnosis of DHF. Therefore, accurate identification of LV wall motion abnormalities is of great importance in the assessment of the patient with potential diastolic dysfunction. Since LA pressures are elevated in patients with significant diastolic dysfunction in the presence of increased preload, and since the LA cannot adequately empty in to the LV during diastole in this hemodynamic scenario, LA enlargement (≥ 30 ml/m²) is usually seen.⁵ (Figure 1)

Increasing LA size correlates with increasing LV filling pressures and worse outcome in patients with diastolic HF.⁹ In addition, LA size has been called the barometer of LV diastolic dysfunction or LV filling pressures, although certainly other entities, such as atrial fibrillation or chronic hypertension, can result in LA enlargement in absence of significant elevation of LA pressure.⁶ It has therefore been said that LA volume has a better negative—as opposed to positive—predictive value for significant diastolic dysfunction and heart failure; that is, a normal or small LA largely excludes significantly elevated LA pressure, while a large LA volume may occur in the absence of significant LA dilation.¹⁰ Studies have also shown that LA volume is a much better measurement of LA enlargement than a simple antero-posterior diameter, and therefore is the recommended way to measure LA size by echocardiography.⁶ It is also important to integrate 2-dimensional echocardiographic variables in the assessment of diastolic

function; for instance, in cases of ischemic or infiltrative heart disease, significant LV hypertrophy may be absent, yet LA volumes are often enlarged.⁵

Diastolic dysfunction and demonstration of elevated LV filling pressures

Transmitral Doppler

Transmitral Doppler (“mitral inflow pattern”) is essential for the assessment of LV filling pressures. Early mitral filling depends on intrinsic LV relaxation, and the difference between LA and LV early (or “opening”) diastolic pressure.⁵ In a healthy, young heart with normal, rapid diastolic suction, the LV literally “sucks” blood into the LV, resulting in rapid LA emptying. In this scenario, there is a relatively tall E wave, and a shorter A (late diastolic or “atrial contraction” wave) (Figure 3). In an LV with impaired relaxation but normal LV filling pressures, there is no rapid LV diastolic suction, thus LA emptying is more gradual, and results in a relatively low velocity E wave; LA emptying is therefore dependent on LA contraction, and results in a relatively high amplitude A wave. In the setting of impaired LV relaxation and mildly elevated LA pressure, high LA pressure that “drives” open the MV, resulting in a large E wave and smaller A wave; this pattern is termed “pseudonormalization”. In markedly elevated LV filling pressure in which LV stiffness is high, the MV is forced open early due to high LA pressure, but there is rapid equilibration with the high resting LV diastolic pressure resulting in a rapid deceleration time of E. This pattern is termed “restrictive filling” (Figure 1).³⁻⁵ The grades of diastolic function, as assessed using comprehensive echo-Doppler examination, are shown in Figure 2.

Valsalva manoeuver

The Valsalva manoeuver, in which the patient forces expiration against a closed glottis, there is increased intrathoracic pressure which results in decrease in right heart filling which by definition, results in decreased LV filling (decreased preload). Since a pseudonormal filling pattern exists in the setting of elevated LA pressure in the presence of impaired LV relaxation, this decrease in preload lowers LA pressure, which then “unmasks” the underlying impaired relaxation pattern (that is, $E>A$ in the setting of impaired relaxation and with Valsalva manoeuver changes the transmitral pattern to $E<A$). (Figure 5) On the other hand, in the setting of normal diastolic function, the decrease in preload resulting from the Valsalva manoeuver preserves the $E>A$ pattern, without changing it to $E<A$. Therefore, one of the main uses of the Valsalva manoeuver—similar to tissue Doppler e' —is to help distinguish normal from pseudonormal filling pattern. In the presence of a restrictive filling pattern, the Valsalva manoeuver will decrease preload and therefore help distinguish irreversible restrictive filling pattern (in which $E>>A$ will not change) from reversible restrictive filling, where decreased preload changes the restrictive filling pattern to either pseudonormal ($E>A$) or impaired relaxation pattern ($E<A$), since the increased intrathoracic pressure resulting from Valsalva decreases LA pressure.

Tissue Doppler imaging

Tissue Doppler early diastolic mitral annular velocity (e'), which is relatively non-load dependent in patients with cardiac disease, is generally thought to be the best non-

invasive estimate of LV relaxation^{11 12 13 14}. The longer it takes for the LV to relax, the lower is the e' velocity. The resulting E/e' ratio, has been validated as a reasonably reliable non-invasive indicator of LV filling pressure in patients with preserved or depressed LVEF (Figure 1).¹¹⁻¹⁴ It should be mentioned that one study, performed in the intensive care unit in patients in decompensated heart failure, questioned the correlation of E/e' and LV filling pressures.¹⁵ In patients with normal hearts, E/e' does not accurately predict LV filling pressure due to correlation of e' with LV filling pressures in such subjects, as opposed to lack of such a correlation in patients with cardiac disease.¹⁶ The E/e' ratio has since been demonstrated to be useful in estimating LV filling pressures in hypertrophic cardiomyopathy¹⁷, sinus tachycardia¹⁸, atrial fibrillation¹⁹, and post-cardiac transplantation.²⁰ An important consideration when using E/e' is the “grey zone” of indeterminate values: in general, in patients with preserved LVEF and using e' averaged from the mitral septal and lateral annuli, if $E/e' \leq 8$, LV filling pressures are likely normal; if $E/e' \geq 13$, LV filling pressures are likely elevated⁵; however, between 9 and 12, E/e' can be indeterminate. In such cases—in addition to incorporating other echo-Doppler parameters (LA volume, pulmonary venous Doppler, PA pressure)—use of B-type natriuretic peptide (BNP) and N-terminal pro-BNP can be useful to help decide if LV filling pressures are indeed elevated or not.^{21,22} The E/A ratio, mitral deceleration time, and E/e' ratio have all been shown to be useful echocardiographic indicator of LV diastolic dysfunction, and more particularly, of elevated LV filling pressures.⁵ These variables have also been shown to be markers of outcome in patients with HF.^{9 23}

Transmitral color Doppler flow propagation velocity

Color Doppler m-mode imaging can be applied in the apical views to semi-quantitate the velocity and rate of blood flow from the mitral valve annulus to the LV apex (Figure 3). In this way, the early diastolic filling wave by color m-mode, which appears in red color as blood flow from the mitral valve level to the LV apex can be identified. The slope of this early diastolic color m-mode wave (V_p), is rapid (vertical) in patients with normal diastolic function due to rapid diastolic suction in which blood quickly flow from MV to LV apex. However, in the presence of increasingly impaired relaxation, this slope become flatter and flatter, reflecting increasingly impaired LV relaxation. A ratio, E/V_p , similar to E/e' , has therefore been developed and validated, and correlates to mean LA pressure.²⁴ An $E/V_p > 15$ reasonably correlates with PCWP >15 mmHg, although there are many hemodynamic, rhythm and myocardial motion variables which can impact this relationship. Furthermore, some studies have shown that, in comparison to invasive measurement of LV filling pressures, E/e' appears more accurate than E/V_p .²⁵

Spectral Doppler pulmonary venous flow

In the normal heart with rapid ventricular suction, the diastolic pulmonary venous wave is augmented, due to rapid flow through the pulmonary veins into the LA, through the mitral valve, and into the LV. Therefore, in the completely normal heart, the dominant PV diastolic wave corresponds to the dominant transmitral E wave, and is a sign of normal LV lusotropic function; the completely normal heart therefore has $PV S < D$. However, when LV relaxation becomes impaired, PV flow during LV diastole becomes

truncated, and therefore most filling occurs during LV systole, resulting in $S > D$, which corroborates to transmitral $E < A$ (Grade I diastolic dysfunction).²⁶ When LA pressure becomes elevated, PV flow during LV systole decreases, as LA pressure in the setting of a closed MV, prevents normal PV flow, and PV flow becomes higher in diastolic when the mitral valve opens, relieving elevated LA pressure; this results in PV $S < D$, corresponding to $E > A$, (Grade II diastolic dysfunction). Therefore, PV flow is subject to pseudonormalization in the same way as transmitral flow. In restrictive filling, the PV pseudonormal pattern becomes more exaggerated, with $S \ll D$, with a rapid deceleration time of D. While the PV S/D ratio reflects mean LA pressure, the PV atrial reversal wave reflects LV end-diastolic pressure, as, if the LA contracts against the high diastolic pressure in the LV, blood will preferentially flow backwards into the PV, as opposed to transmitrally into the LV. Therefore, PV Ar wave is higher and longer than transmitral A, rendering PV Ar-A a measure of LV end-diastolic pressure.

Tricuspid regurgitation velocity for pulmonary artery pressure estimation

In the setting of high LA pressure in the patient with diastolic heart failure, pressure is transmitted back into the pulmonary veins, and across the pulmonary venous-capillary bed into the pulmonary arterioles and into the pulmonary arteries; therefore, pulmonary arterial hypertension (PAH) can result.²⁷ In this way, PA pressure estimated by addition of an estimate of RA pressure (by assessing IVC size and response to respiration), is a good surrogate marker of significant, and often chronic, LA pressure elevation (Figure 4). As recommended by guidelines, PASP > 35 mmHg often

accompanies advanced or significant LV diastolic dysfunction with elevated LA pressures.⁵ However, as with LA volume, the presence of significant PAH does not necessarily mean significant diastolic dysfunction, as significant elevations in pulmonary vascular resistance (PVR) due to intrinsic lung disease must first be excluded. Likewise, normal PASP can be helpful in excluding significant and long standing LA pressure elevation, provided a complete TR jet is obtained with correct Doppler sample volume angulation in respect of the direction of TR, and with correct RA pressure estimation. PA end-diastolic pressure, which in the absence of significant elevations in PVR can be a good estimate of mean LA pressure, can be estimated from the pulmonary regurgitation diastolic wave, with RA pressure then added to it as is done with PASP.²⁸

The patient with atrial fibrillation and other special situations: Diastolic assessment

It may be challenging to accurately assess LV diastolic function by echocardiography in patients with atrial fibrillation. Owing to elevated heart rate, irregular R-R intervals, and loss of atrial contraction, echo-Doppler assessment can at times be problematic. However, mitral DT <150 ms, lack of variation in E wave velocity despite varying R-R intervals (as there remains an elevated opening gradient between the LA and LV at mitral opening—early diastolic filling E wave—despite longer diastolic filling periods when the LA pressure should decrease), IVRT <65 ms, elevation of E/e' (>11), and presence of pulmonary hypertension in the absence of lung disease, are all clues to the presence of elevated LA pressure in the setting of AF.^{5 29 30} The E/e' ratio can also be used in patients with AF, although with somewhat lower accuracy than in patients in

sinus rhythm, for the estimation of LV filling pressures, as long as >5 cardiac cycles are used and averaged (which holds for any Doppler parameter in AF).¹⁹ In patients who are in supraventricular tachycardia, atrial flutter, paced rhythm or heart block, LV diastolic assessment can be very difficult, although presence of both significant LA enlargement and pulmonary hypertension in the absence of lung disease can be an important clue to elevated LA pressures in these scenarios. Another unclear scenario is the effect of significant mitral regurgitation (MR) on e' and the E/e' ratio in estimating LV filling pressures. It has been shown that in patients with secondary MR (due to LV disease), E/e' accurately predicted PCWP; however, in patients with primary MR (due to a primary mitral valve abnormality), E/e' was not reliably predictive of PCWP.³¹

Diastolic stress echocardiography

Patients with LVEF ($\geq 50\%$) who present with dyspnea—particularly exertional dyspnea—may not have significant LV diastolic dysfunction at rest. Yet, during exercise, increased heart rate, and peripheral muscle and central organ oxygen demand may cause LV diastolic decompensation, unmasking significant LV diastolic dysfunction with exertion not detectable at rest.^{32,33} In this way, transmitral Doppler parameters (E , A , E/A), E/e' , and Doppler-estimated pulmonary artery pressures, and their response to exertion, are valuable tools to diagnose exertional diastolic heart failure.^{34,35} Clinically speaking, elderly, hypertensive, diabetic, obese, and female patients are at highest risk of having exercise induced diastolic dysfunction, and are often candidates for diastolic stress echocardiography (DSE). Tables 1 and 2 illustrate, respectively, a suggested protocol for

performance of DSE, and the changes in echo-Doppler variables that connote a positive test. It is important to note that patients with \geq grade II diastolic dysfunction at rest (pseudonormal filling or greater) already have findings consistent with elevated LV filling pressures, and generally do not need to undergo diastolic stress echocardiography; therefore, patients with exertional dyspnea and normal or minimally elevated LV filling pressures at rest are those best considered for DSE.

Multiple echocardiographic variables are needed for accurate diastolic assessment

It is critical to integrate several variables—2-dimensional, conventional and tissue Doppler—in order to arrive at a correct diastolic assessment, as opposed to relying on a single variable (such as LA size or E/e') alone which can lead to errors (Table 3). Indeed, current guideline recommend an integrated approach of many diastolic variables (Figures 5 and 6), and data has shown that additional echocardiographic variables, when added to E/e' can result in more accurate diastolic determination, compared to invasively measured LV filling pressures, than E/e' alone.³⁶ Not infrequently, echo-Doppler parameters appear to conflict: for instance, in a patient with normal LVEF, E/e'=13, but LA volume is not enlarged, E<A, and there are normal pulmonary pressures by Doppler. In such cases, the E/e' ratio should likely be dropped, since all other variables point toward normal LV filling pressures. Therefore, as a rule, multiple echo-Doppler parameters of LV diastolic function should be assessed in every patient³⁷, and the conclusion to which most parameters point, should be the overall diastolic assessment, with “outlying” parameters discarded. In most cases of conflicting echo-

Doppler diastolic parameters, a cogent conclusion can be reached, although in some cases, the diastolic assessment may remain equivocal. Above all, no single diastolic parameter should be used in isolation to arrive at a diastolic conclusion in a given patient.⁵

Future directions

Speckle tracking echocardiography tracks signature gray-scale characteristics of points in the LV myocardium, thus providing information on displacement, velocity, deformation and deformation rate (strain and strain rate, respectively), independent of angulation and cardiac translational motion.³⁸ Such non-Doppler-based 2D imaging variables have provided detailed information on myocardial mechanics in hypertensive heart disease, hypertrophic cardiomyopathy, diastolic and systolic LV failure, and well as in cases of pulmonary hypertension.^{39 40 41} Currently, such speckle-based measures are being studied to assess their role in identifying patient outcome in various heart failure states. One of the most attractive features of speckle tracking is that it can demonstrate the presence of systolic abnormalities, especially regional ones, in the presence of preserved LVEF in patients with cardiac disease.⁴² Speckle tracking can also demonstrate systolic and diastolic abnormalities in multiple vectors (longitudinal, radial, circumferential and rotational) as characteristic myocardial markers are tracked throughout the cardiac cycle and in space as the heart translates in the thoracic cavity. In particular, patients with diastolic dysfunction and DHF have been shown to have preserved LV twist (systole) and untwist (diastole) but impaired longitudinal strain,

whereas patients with HF with depressed EF have impaired twist/untwist as well as depressed longitudinal and circumferential strain.³⁸⁻⁴² Newer echocardiographic variables such as flow velocity fields derived from color sequences can measure intraventricular fluid mechanics, an important determinant of global chamber LV operative stiffness; in this way, impaired LV vortex generation can be identified, which has been shown to be a mechanism of LV diastolic dysfunction.⁴³ Finally, LA strain and strain rate, which are measures of LA deformation and deformation rate, respectively, have also been shown to be markers of early diastolic dysfunction, in both patients with heart failure with preserved LVEF^{44 45 46} and in hypertrophic cardiomyopathy.⁴⁷

Conclusions

To arrive at an accurate assessment of cardiac diastolic function, comprehensive echocardiography with 2-dimensional imaging, spectral and color Doppler—as well as newer techniques speckle strain echocardiography—are utilized. This assessment, which includes LV mass and regional wall motion assessment, LA volume, transmitral, pulmonary venous, and tissue Doppler as well as estimation of PA systolic and diastolic pressures, can provide accurate assessments of diastolic function in the majority of patients. It is important to note that, as recommended in current guidelines, use of any single echo-Doppler diastolic variable (for example only E/e') in isolation, can lead to errors. Therefore, it is of utmost importance that a comprehensive assessment of LV diastolic function include integration of all available 2D and Doppler, and tissue Doppler variables to arrive at the most accurate diastolic assessment.

Figures

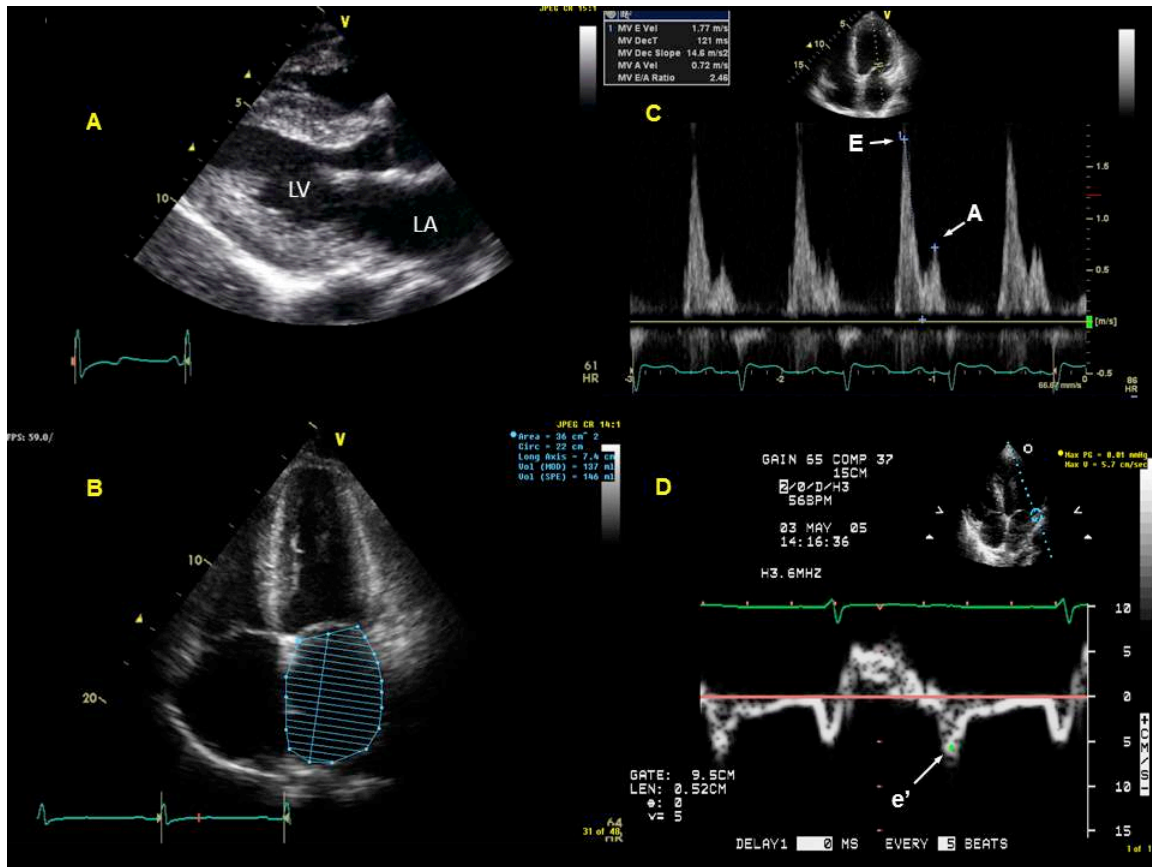


Figure 1. Comprehensive diastolic assessment with echocardiography in a patient

with diastolic heart failure: Chronic hypertension is a common scenario for the development of diastolic dysfunction, and the hypertrophied left ventricle (LV) develops impaired relaxation, and in the right loading conditions, can result in elevated left atrial (LA) pressure. This patient with chronic hypertension presented with dyspnea. Echocardiography revealed concentric LV hypertrophy (LV mass index was 119 g/m^2 , Panel A) with preserved LV ejection fraction of 62%. The patient also has severely

dilated left atrium (LA) from chronic elevation in LA pressures in the setting of left ventricular hypertrophy from chronic hypertension (Panel B). This patient had severe LA enlargement, with an unindexed LA volume of 137 ml and an indexed volume of 72 ml/m². Panel C shows restrictive diastolic filling pattern in the transmitral spectral Doppler with E/A=2.46 and deceleration time = 121 ms, reflective of significantly elevated LV filling pressures. Panel D shows tissue Doppler at the lateral LV mitral annulus with a depressed e' velocity of 5.7 cm/s, indicating impaired LV relaxation; when e' is divided into the transmitral E velocity of 177 cm/s, this results in an elevated E/e' of 31, confirming significantly elevated LV filling pressures.

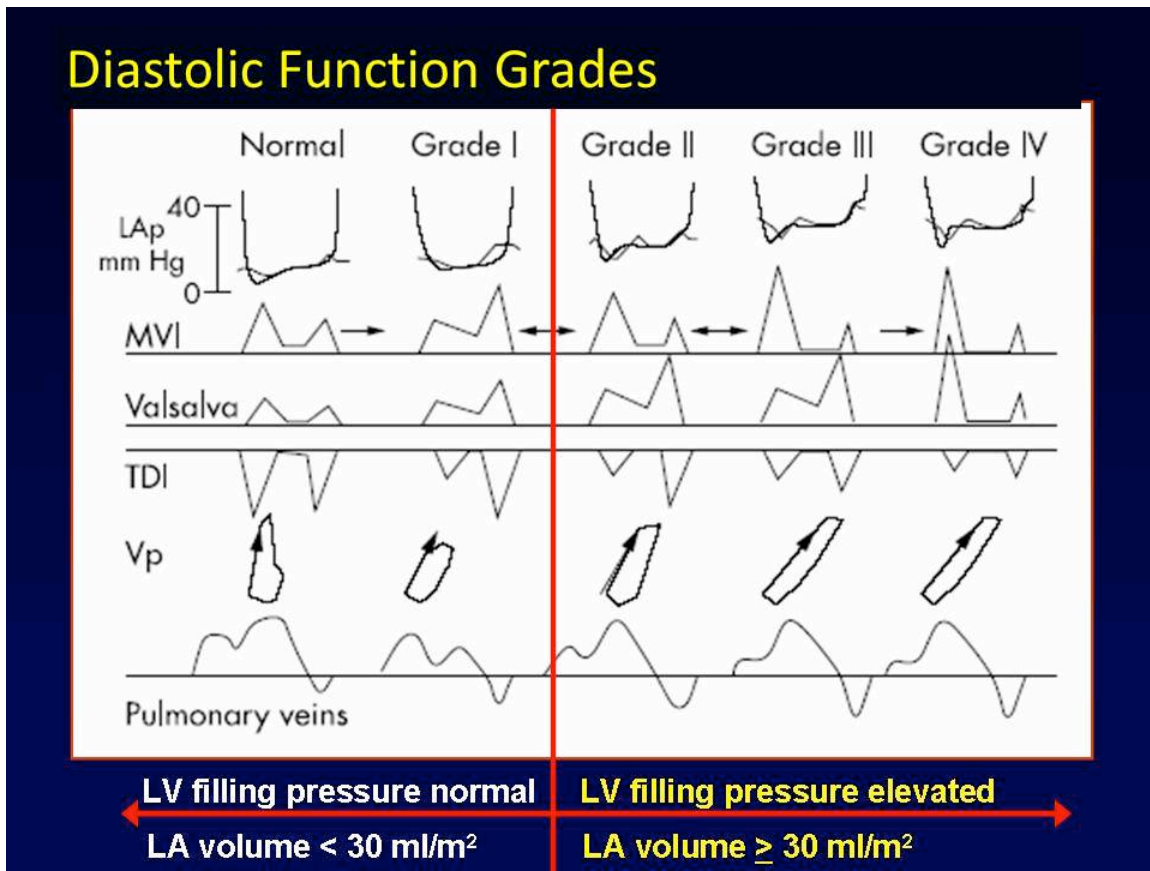


Figure 2. Diastolic function grades: Left ventricular (LV) diastolic function ranges from normal (Grade 0) to impaired relaxation (Grade I), to pseudonormal (Grade II), to restrictive (Grade III), and irreversibly restrictive (Grade IV). LV relaxation and left atrial pressures (LAp) increase from Grades 0 to IV, as does LA volume. Mitral valve inflow (MVI), tissue Doppler imaging, Valsalva manoeuvre, flow propagation velocity (Vp) and pulmonary venous flow are all helpful in distinguishing Grades of LV diastolic function, and should be used together for an integrated approach to the assessment of diastolic function as recommended in current guidelines. (Figure adapted from Reference 31).

Diastolic Assessment: Transmitral Flow Propagation Velocity (Vp)

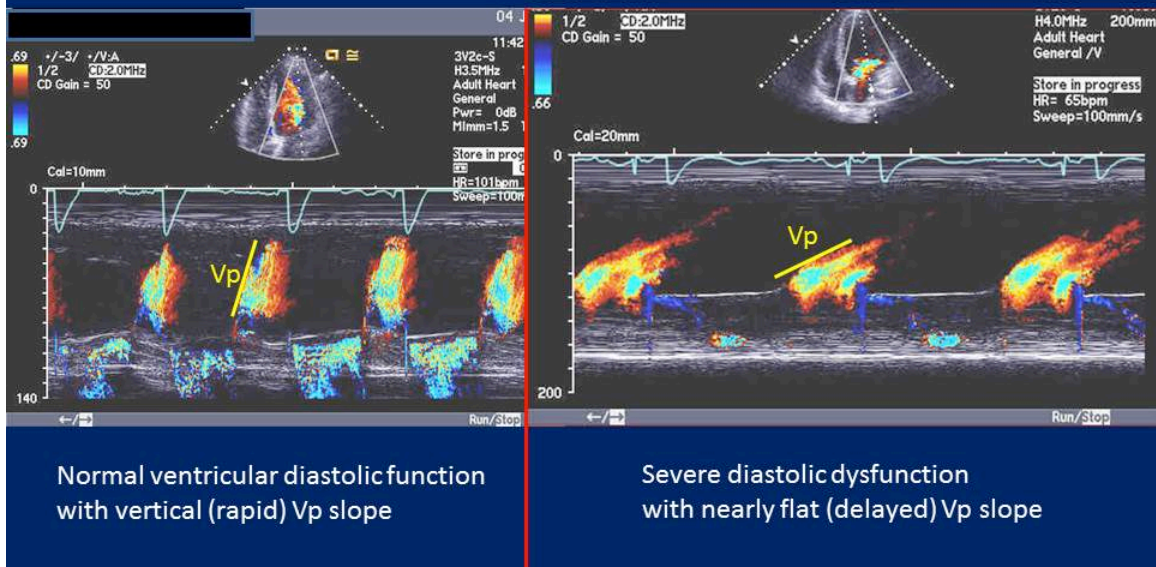


Figure 3. Diastolic assessment: Transmitral flow propagation velocity (Vp): Placing the color Doppler sample volume from the mitral annular level to the left ventricular (LV) apex, the more rapid the LV relaxation, the faster blood travels from the mitral annular level to the LV apex, and hence the more vertical the color Doppler mitral inflow m-mode and the more rapid the Vp slope (left panel). On the other hand, the more impaired the LV relaxation, the slower it take for blood to go from the mitral annular to the LV apex, hence a “flatter” Vp slope (right panel).

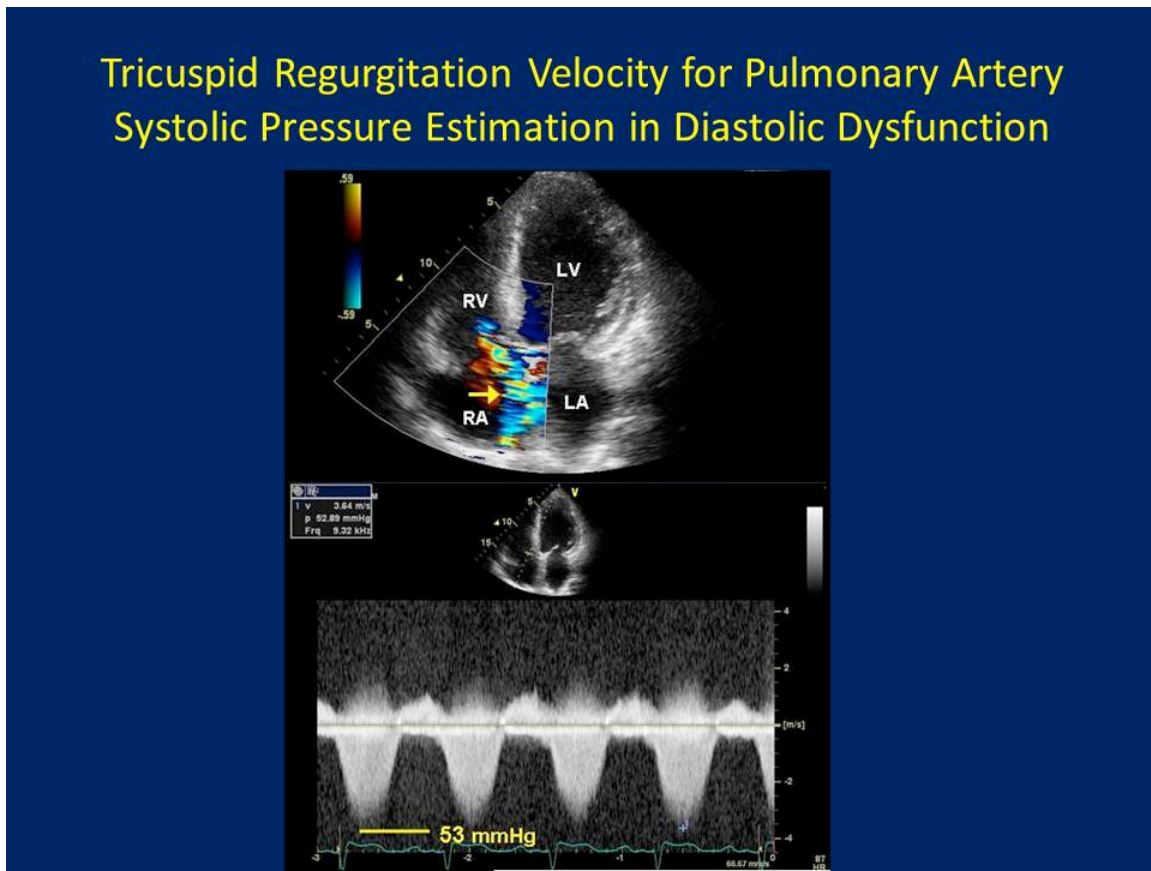


Figure 4. Tricuspid regurgitation velocity for pulmonary artery systolic pressure estimation in diastolic dysfunction: In patients with significant left ventricular (LV) diastolic dysfunction with chronically elevated LV filling pressures, back-pressure through the left atrium (LA), into the pulmonary veins, and across the pulmonary venous-capillary bed into the pulmonary arterioles and pulmonary arteries (PA), results in elevation of PA pressure. Thus, PA systolic pressure elevation, in the absence of significant intrinsic lung disease and resultant elevated pulmonary vascular resistance (PVR), is a reasonable correlate of elevated LA pressures. PA systolic pressure can be estimated by Doppler using the tricuspid regurgitation peak systolic velocity and adding to it an estimate of right atrial (RA) pressure. This image shows a TR velocity of 3.64

m/s, equivalent to a TR systolic pressure of 53 mmHg, which indicates at least moderate PA hypertension in patient with chronically elevated LA pressure due to ischemic cardiomyopathy and diastolic dysfunction. RV=right ventricular.

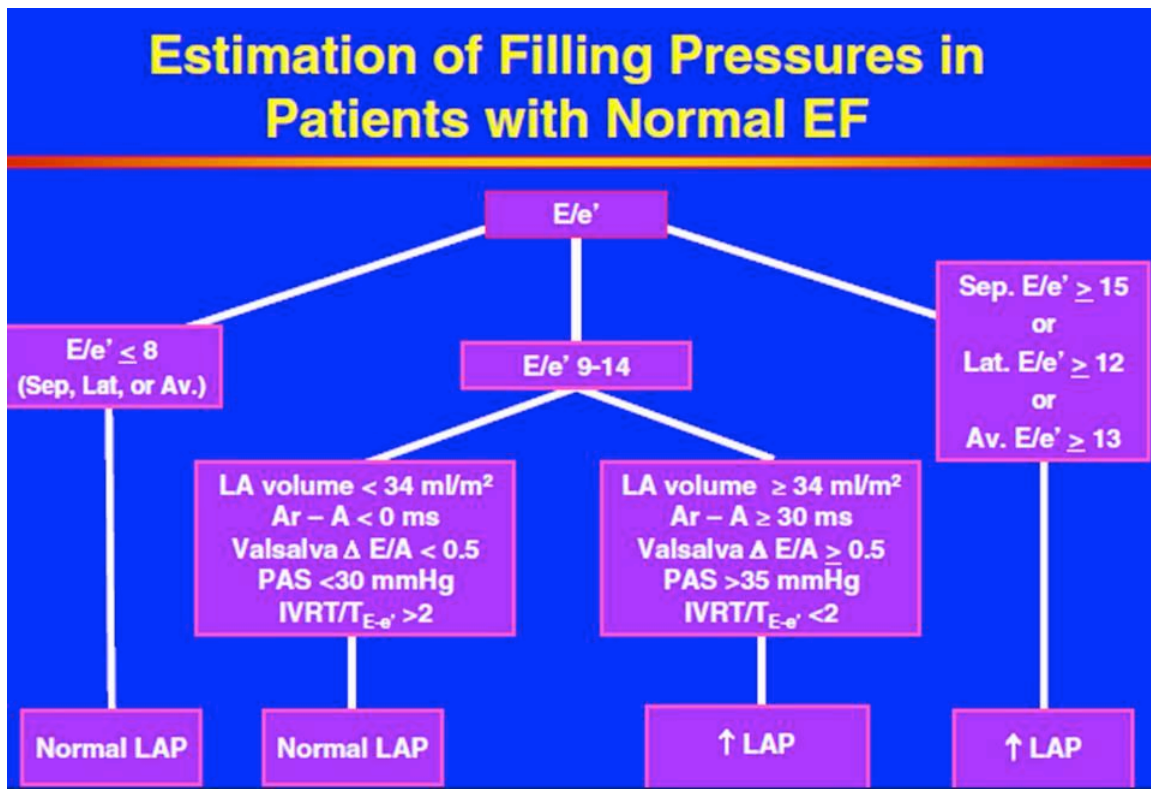


Figure 5. An integrated approach to the assessment of left ventricular diastolic

function: Normal LV ejection fraction: As recommended in current guidelines, use of multiple echo-Doppler parameters results in a more accurate assessment of left ventricular (LV) diastolic function than using any single echo-Doppler parameter in isolation. In the patient with normal LV ejection fraction (EF), it is reasonable to start with early transmitral diastolic velocity/tissue Doppler early diastolic velocity (E/e'), as it can be difficult to discern whether a patient with preserved LVEF has impaired or normal LV relaxation. Following E/e' , other echo-Doppler variables are added to result in an accurate assessment of LV diastolic function. (From Reference 5).

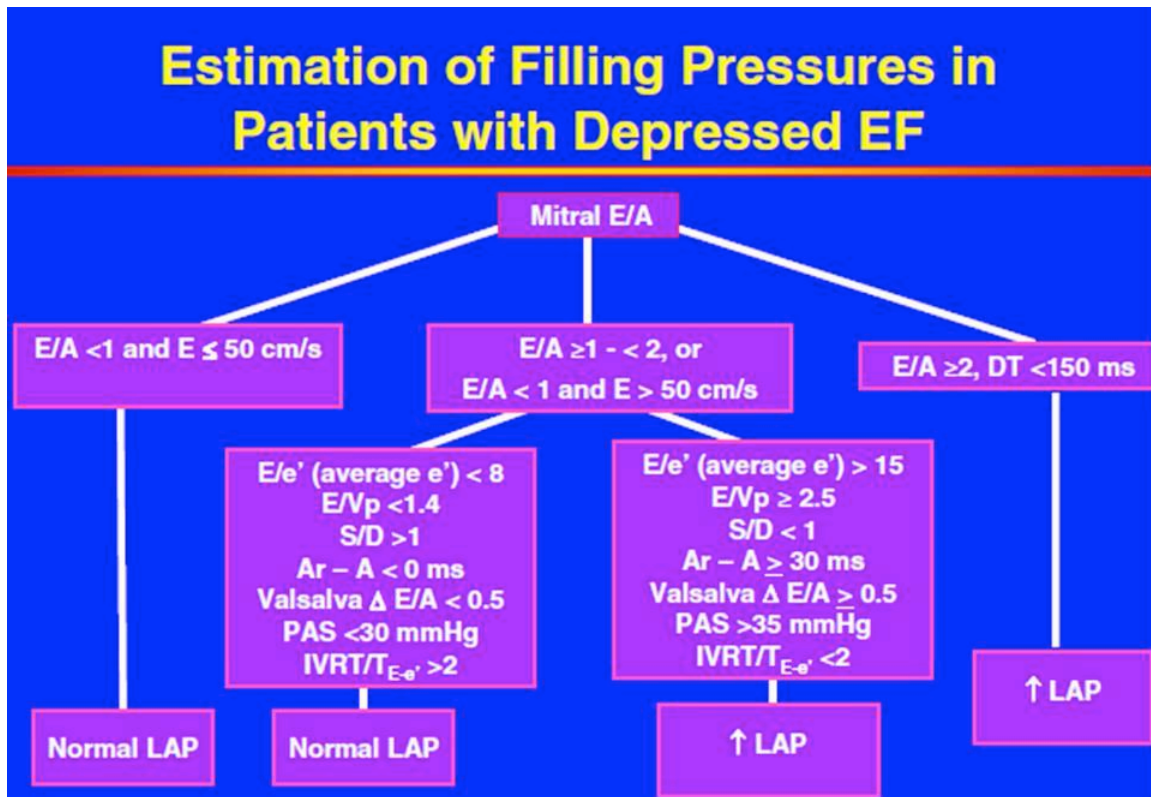


Figure 6. An integrated approach to the assessment of left ventricular diastolic

function: Depressed ejection fraction: As recommended in current guidelines, use of multiple echo-Doppler parameters results in a more accurate assessment of left ventricular (LV) diastolic function than using any single echo-Doppler parameter in isolation. In the patient with depressed LV ejection fraction (EF), it is reasonable to start with early and late transmitral diastolic inflow velocities and deceleration time (E, A and DT, respectively), as it can be assumed that patients with depressed LVEF (<50%) have, by definition, impaired LV relaxation. Following transmitral diastolic flow, other echo-Doppler variables are added to result in an accurate assessment of LV diastolic function. (From Reference 5).

References

-
- ¹ Paulus WJ, Tschöpe C, Sanderson JE, et al. How to diagnose diastolic heart failure: a consensus statement on the diagnosis of heart failure with normal left ventricular ejection fraction by the Heart Failure and Echocardiography Associations of the European Society of Cardiology. *Eur Heart J* 2007;28:2539-50.
- ² Zile MR, Baicu CF, Gaasch WH. Diastolic heart failure--abnormalities in active relaxation and passive stiffness of the left ventricle. *N Engl J Med* 2004;350:1953-9.
- ³ Oh JK, Hatle L, Tajik AJ, Little WC. Diastolic heart failure can be diagnosed by comprehensive two-dimensional and Doppler echocardiography. *J Am Coll Cardiol* 2006;47:500-6.
- ⁴ Lester SJ, Tajik AJ, Nishimura RA, Oh JK, Khandheria BK, Seward JB. Unlocking the mysteries of diastolic function: deciphering the Rosetta Stone 10 years later. *J Am Coll Cardiol* 2008;51:679-89.
- ⁵ Nagueh SF, Appleton CP, Gillebert TC, et al. Recommendations for the Evaluation of Left Ventricular Diastolic Function by Echocardiography. *J Am Soc Echocardiogr* 2009;22:107-33.
- ⁶ Abhayaratna WP, Seward JB, Appleton CP, et al. Left atrial size: physiologic determinants and clinical applications. *J Am Coll Cardiol* 2006;47:2357-63.

⁷ Lang RM, Bierig M, Devereaux RB, et al. Recommendations for chamber quantification. *J Am Soc Echocardiogr* 2005;18:1440–63.

⁸ Dokainish H, Sengupta R, Pillai M, Bobek J, Lakkis N. Assessment of left ventricular systolic function using echocardiography in patients with preserved ejection fraction and elevated diastolic pressures. *Am J Cardiol* 2008;101:1766-71.

⁹ Dokainish H, Zoghbi WA, Lakkis NM, Ambriz E, Patel R, Quinones MA, Nagueh SF. Incremental predictive power of B-type natriuretic peptide and tissue Doppler echocardiography in the prognosis of patients with congestive heart failure. *J Am Coll Cardiol* 2005;45:1223-6.

¹⁰ Dokainish H, Zoghbi WA, Lakkis NM, Al-Bakshy F, Dhir M, Quinones MA, Nagueh SF. Optimal noninvasive assessment of left ventricular filling pressures: a comparison of tissue Doppler echocardiography and B-type natriuretic peptide in patients with pulmonary artery catheters. *Circulation* 2004;109:2432-9.

¹¹ Sohn D, Chai L, Lee D, et al. Assessment of mitral annulus velocity by Doppler tissue imaging in the evaluation of left ventricular diastolic function. *J Am Coll Cardiol* 1997;30:474-80.

¹² Nagueh SF, Middleton KJ, Kopelen HA, Zoghbi WA, Quiñones MA. Doppler tissue imaging: a noninvasive technique for evaluation of left ventricular relaxation and estimation of filling pressures. *J Am Coll Cardiol* 1997;30:1527-33.

¹³ Ommen SR, Nishimura RA, Appleton CP, Miller FA, Oh JK, Redfield MM, Tajik AJ.

Clinical utility of Doppler echocardiography and tissue Doppler imaging in the estimation of left ventricular filling pressures: A comparative simultaneous Doppler-catheterization study. *Circulation* 2000;102:1788-94.

¹⁴ Kasner M, Westermann D, Steendijk P, et al. Utility of Doppler echocardiography and tissue Doppler imaging in the estimation of diastolic function in heart failure with normal ejection fraction: a comparative Doppler-conductance catheterization study.

Circulation 2007;116:637-47.

¹⁵ Mullens W, Borowski AG, Curtin RJ, Thomas JD, Tang WH. Tissue Doppler imaging in the estimation of intracardiac filling pressure in decompensated patients with advanced systolic heart failure. *Circulation* 2009;119:62-70.

¹⁶ Firstenberg MS, Levine BD, Garcia MJ, Greenberg NL, Cardon L, Morehead AJ, Zuckerman J, Thomas JD. Relationship of echocardiographic indices to pulmonary capillary wedge pressures in healthy volunteers. *J Am Coll Cardiol* 2000;36:1664-9.

¹⁷ Nagueh SF, Lakkis NM, Middleton KJ, Spencer WH 3rd, Zoghbi WA, Quinones MA. Doppler estimation of left ventricular filling pressures in patients with hypertrophic cardiomyopathy. *Circulation* 1999;99:254-61.

¹⁸ Nagueh SF, Mikati I, Kopelen HA, Middleton KJ, Quinones MA, Zoghbi WA. Doppler estimation of left ventricular filling pressure in sinus tachycardia. A new application of tissue Doppler imaging. *Circulation* 1998;98:1644-50.

¹⁹ Sohn DW, Song JM, Zo JH, Chai IH, Kim HS, Chun HG, Kim HC. Mitral annulus velocity in the evaluation of left ventricular diastolic function in atrial fibrillation. *J Am Soc Echocardiogr* 1999;12:927-31

²⁰ Sundereswaran L, Nagueh SF, Vardan S, Middleton KJ, Zoghbi WA, Quinones MA, Torre-Amione G. Estimation of left and right ventricular filling pressures after heart transplantation by tissue Doppler imaging. *Am J Cardiol* 1998;82:352-7.

²¹ Grewal J, McKelvie R, Lonn E, Tait P, Carlsson J, Gianni M, Jarnert C, Persson H. BNP and NT-proBNP predict echocardiographic severity of diastolic dysfunction. *Eur J Heart Fail* 2008;10:252-9.

²² Dokainish H, Zoghbi WA, Lakkis NM, Ambriz E, Patel R, Quinones MA, Nagueh SF. Incremental predictive power of B-type natriuretic peptide and tissue Doppler echocardiography in the prognosis of patients with congestive heart failure. *J Am Coll Cardiol* 2005;45:1223-6.

²³ Yu CM, Sanderson JE, Marwick TH, Oh JK. Tissue Doppler imaging a new prognosticator for cardiovascular diseases. *J Am Coll Cardiol* 2007;49:1903-14

²⁴ Garcia MJ, Ares MA, Asher C, Rodriguez L, Vandervoort P, Thomas JD. An index of early left ventricular filling that combined with pulsed Doppler peak E velocity may estimate capillary wedge pressure. *J Am Coll Cardiol* 1997;29:448-54.

²⁵ Rivas-Gotz C, Manolios M, Thohan V, Nagueh SF. Impact of left ventricular ejection fraction on estimation of left ventricular filling pressures using tissue Doppler and flow propagation velocity. *Am J Cardiol* 2003;91:780-4.

²⁶ Appleton CP, Galloway JM, Gonzalez MS, Gaballa M, Basnight MA Estimation of left ventricular filling pressures using two-dimensional and Doppler echocardiography in adult patients with cardiac disease. Additional value of analyzing left atrial size, left atrial ejection fraction and the difference in duration of pulmonary venous and mitral flow velocity at atrial contraction. *J Am Coll Cardiol* 1993;22:1972-82.

²⁷ Neuman Y, Kotliroff A, Bental T, Siegel RJ, David D, Lishner M. Pulmonary artery pressure and diastolic dysfunction in normal left ventricular systolic function. *Int J Cardiol* 2008;127:174-8.

²⁸ Paraskevaidis IA, Tsiapras DP, Karavolias GK, Cokkinos P, Kremastinos DT. Doppler-derived left ventricular end-diastolic pressure prediction model using the combined analysis of mitral and pulmonary A waves in patients with coronary artery disease and preserved left ventricular systolic function. *Am J Cardiol* 2002;90:720-4.

²⁹ Nagueh SF, Kopelen HA, Quiñones MA. Assessment of left ventricular filling pressures by Doppler in the presence of atrial fibrillation. *Circulation* 1996;94:2138-45.

³⁰ Al-Omari MA, Finstuen J, Appleton CP, Barnes ME, Tsang TS. Echocardiographic assessment of left ventricular diastolic function and filling pressure in atrial fibrillation. *Am J Cardiol* 2008;101:1759-65.

³¹ Bruch C, Stypmann J, Gradaus R, Breithardt G, Wichter T. Usefulness of tissue Doppler imaging for estimation of filling pressures in patients with primary or secondary pure mitral regurgitation. *Am J Cardiol* 2004;93:324-8.

³² Talreja DR, Nishimura RA, Oh JK. Estimation of left ventricular filling pressure with exercise by Doppler echocardiography in patients with normal systolic function: a simultaneous echocardiographic-cardiac catheterization study. *J Am Soc Echocardiogr* 2007;20:477-9.

³³ Grewal J, McCully RB, Kane GC, Lam C, Pellikka PA. Left ventricular function and exercise capacity. *JAMA* 2009;301:286-94.

³⁴ Ha JW, Oh JK, Pellikka PA, Ommen SR, Stussy VL, Bailey KR, Seward JB, Tajik AJ. Diastolic stress echocardiography: a novel noninvasive diagnostic test for diastolic dysfunction using supine bicycle exercise Doppler echocardiography. *J Am Soc Echocardiogr* 2005;18:63-8.

³⁵ Burgess MI, Jenkins C, Sharman JE, Marwick TH. Diastolic stress echocardiography: hemodynamic validation and clinical significance of estimation of ventricular filling pressure with exercise. *J Am Coll Cardiol* 2006;47:1891-900.

³⁶ Dokainish H, Nguyen JS, Sengupta R, Pillai M, Alam M, Bobek J, Lakkis N. Do additional echocardiographic variables increase the accuracy of E/e' for predicting left ventricular filling pressure in normal ejection fraction? An echocardiographic and invasive hemodynamic study. *J Am Soc Echocardiogr* 2010;23:156-61.

³⁷ Ommen SR, Nishimura RA. A clinical approach to the assessment of left ventricular diastolic function by Doppler echocardiography: update 2003. *Heart* 2003;89 Suppl 3:iii18-23.

³⁸ Perk G, Tunick PA, Kronzon I. Non-Doppler two-dimensional strain imaging by echocardiography--from technical considerations to clinical applications. *J Am Soc Echocardiogr* 2007;20:234-4.

³⁹ Wang J, Khoury DS, Yue Y, Torre-Amione G, Nagueh SF. Preserved left ventricular twist and circumferential deformation, but depressed longitudinal and radial deformation in patients with diastolic heart failure. *Eur Heart J* 2008;29:1283-9.

⁴⁰ Wang J, Khoury DS, Yue Y, Torre-Amione G, Nagueh SF. Left ventricular untwisting rate by speckle tracking echocardiography. *Circulation* 2007;116:2580-6.

⁴¹ Dokainish H, Sengupta R, Pillai M, Bobek J, Lakkis N. Usefulness of new diastolic strain and strain rate indexes for the estimation of left ventricular filling pressure. *Am J Cardiol* 2008;101:1504-9.

⁴² Nguyen JS, Lakkis NM, Bobek J, Goswami R, Dokainish H. Systolic and diastolic myocardial mechanics in patients with cardiac disease and preserved ejection fraction: impact of left ventricular filling pressure. *J Am Soc Echocardiogr* 2010;23:1273-80.

⁴³ Martínez-Legazpi P, Bermejo J, Benito Y, Yotti R, Pérez Del Villar C, González-Mansilla A, Barrio A, Villacorta E, Sánchez PL, Fernández-Avilés F, del Álamo JC. Contribution of the diastolic vortex ring to left ventricular filling. *J Am Coll Cardiol*. 2014;64:1711-21.

⁴⁴ Kraigher-Krainer E, Shah AM, Gupta DK, Santos A, Claggett B, Pieske B, Zile MR, Voors AA, Lefkowitz MP, Packer M, McMurray JJ, Solomon SD; PARAMOUNT Investigators. Impaired systolic function by strain imaging in heart failure with preserved ejection fraction. *J Am Coll Cardiol* 2014;63:447-56.

⁴⁵ Kurt M, Tanboga IH, Aksakal E, Kaya A, Isik T, Ekinci M, Bilen E Relation of left ventricular end-diastolic pressure and N-terminal pro-brain natriuretic peptide level with left atrial deformation parameters. *Eur Heart J Cardiovasc Imaging* 2012;13:524-30.

⁴⁶ Cameli M, Lisi M, Mondillo S, Padeletti M, Ballo P, Tsioulpas C, Bernazzali S, Maccherini M. Left atrial longitudinal strain by speckle tracking echocardiography

correlates well with left ventricular filling pressures in patients with heart failure.

Cardiovasc Ultrasound 2010;8-14.

⁴⁷ Badran HM, Soltan G, Hassan H, Nazmy A, Faheem N, Saadan H, Yacoub MH. Changes in left atrial deformation in hypertrophic cardiomyopathy: Evaluation by vector velocity imaging. Glob Cardiol Sci Pract 2013;2012:67-80.